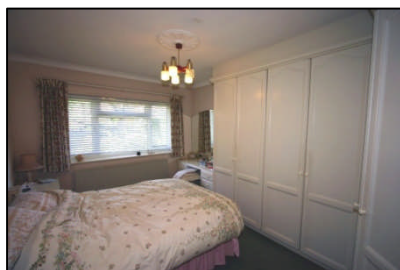


U28

hentons.co.uk

A freehold, centrally heated, double glazed, semi-detached bungalow now requiring modernisation.



10 Heol Uchaf
Rhiwbina
Cardiff CF14 6SP

Accommodation Briefly Comprises: *Entrance Porch *Entrance Hall *Living Room *Kitchen/Breakfast Room *Two Bedrooms *Bathroom/WC *Gardens *Garage *NO CHAIN

PRICE: £169,950 or offer

Ground floor

Entrance Porch

With tiled floor. Half-tiled walls. Double glazed front door and side panel.

Entrance Hall

Double panelled radiator. Coving. Access to loft.

Living Room 15'8" x 10'6"

Tiled fireplace. Two radiators. uPVC double glazed window. Coving.

Kitchen/Breakfast Room 10'11" x 8'1"

Stainless steel sink unit. Base and eye level cupboards. Work tops. Plumbed for automatic washing machine. Two uPVC double glazed windows. Double panelled radiator. Part tiled walls. Potterton wall mounted boiler. Airing cupboard. Door to -

Rear Lobby

uPVC double glazed door to garden.

Bedroom One (front) 13'10" x 10'7"

With a range of fitted wardrobes to one wall. Dressing table. Radiator. Coving. uPVC double glazed window.

Bedroom Two (front) 10'10" x 9'9"

Built-in wardrobe. uPVC double glazed window. Coving. Radiator.

Bathroom/WC

Panelled bath. Pedestal basin. Low level WC. Half-tiled walls. Radiator. uPVC double glazed window. Coving.

Outside

Garage

With up and over door.

Gardens

Front garden mainly lawned.

Rear garden South-facing mainly lawned with borders, trees and shrubs. Greenhouse. Shed.

Tenure

Freehold

PLEASE NOTE: Whilst we endeavour to make our sales details accurate and reliable, if there is any point, which is of particular importance to you, please contact the office and we will be pleased to check the information. Do so particularly if contemplating travelling some distance to view the property. The mention of any appliances and/or services within these details does not imply that they are in full and/or efficient working order. Sales details issued by this office on behalf of another Capital Group member have not been verified by us as accurate under the Property Misdescriptions Act 1991. Any intending purchaser requiring more information should make enquiries through this office.